

Analog Underwater PT-HD Camera



What's including

1. Analog Underwater PT-HD Inspection Camera SS-80502
2. Evaluation Control Board
3. Dedicated Slip Connector with Lead Wires (6 AWG Cable: Approx. 300mm)

Specifications

Image Sensor	1/3" Sony EXview HAD COMS
Resolution	1.3 Megapixel
Video format	PAL (Default) / NTSC (Optional)
S/N Ratio	> 52dB (Min) / (AGC Off)
Video output	1.0VPP Composite Video Signal at 75 ohms
OPTICAL	
Lens	6.0mm Cone Lens (<i>Default</i>) / F2.0
Angles of view	Approx. 44°(D) & 34°(H) in Air
Scanning radius (visibility)	Approx. 5000mm underwater (Light Max) <i>Testing Condition: Underwater Visibility > 5m</i>
Operating radius (optimal)	Approx. 40mm~8000mm (Recommended) underwater

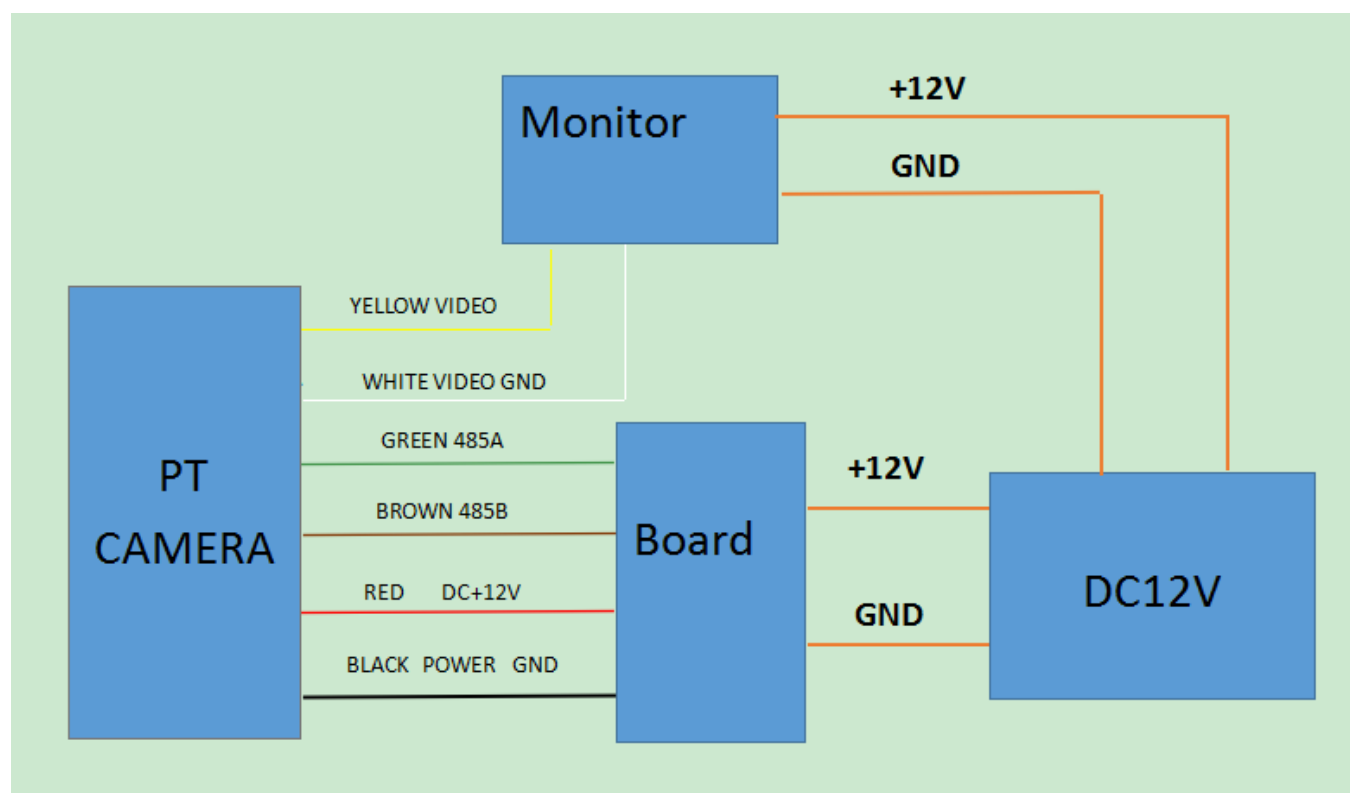


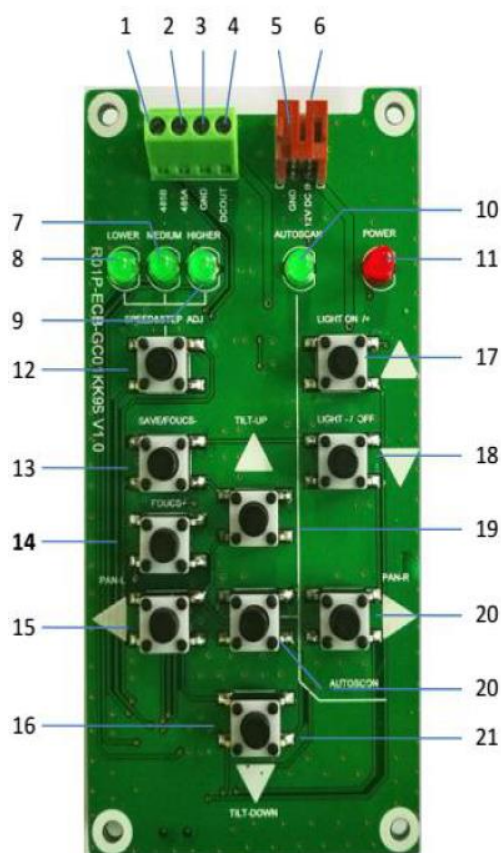
Minimum object distance	Approx. 40mm (Underwater)
NOTE	The viewing distance is mainly affected by the factor of underwater visibility, so the focal point may be change.
Optical dome	32X HD Optical Dome (glass)
Focus	Electric focusing (by key)
ELECTRICAL	
Camera power supply	12Vdc~16Vdc (+10%) /1500mA (Please match right control board according to selected transmission media and control distance)
Power consumption	9W (Max)
Integrated auxiliary lighting	6pcs ultra bright (Approx. 60LM/ pcs) White LED's (50.000 hours lifetime), Adjustable (Level 10)
MECHANICAL	
Dimensions	Body housing OD 43mm Head OD 45mm (Max.) Length Approx. 125.60mm (Inc. Slip connector)
Motion Core	All Metals Parts (Aluminum) Made by CNC.
Tilt Motion	0~180° (or ±90°) Reciprocating motion (Default), (3 Speed & Step SYNC adjustment, Lower, Medium and Higher, Dynamic switch). Tilt Speed (Max.): 36°/s (*), Attainable Resolution (Min): 1.5° (*), Reliability: 39000Hr Continuous Operation (*). (*) Reference Value or Customized.
Pan Motion	360° infinite in both direction. (3 Speed & Step Sync adjustment, Lower, Medium and Higher, Dynamic switch). Pan Speed (Max.): 20°/s (*), Attainable Resolution (Min): 1.5° (*), Reliability: 39000Hr Continuous Operation (*). (*) Reference Value or Customized.
Weight	Approx. 235g in air (Inc. Slip Connector and lead wires) Approx. 130g in water (Inc. Slip Connector and lead wires)
Operating temperature:	-15° / +55° (Recommended)
Storage temperature:	-40° / +80°
Connector	Dedicated Underwater Slip Connector
Leading wire	300mm (default, Optional), manual soldering
AWG	PTFE 22-6.AWG
OH construction:	Stainless steel housing (SUS316), End cap (SUS316), Hemispherical Dome (Optical PC/PMMA)
Water tightness:	IP68 & Safety depth rating: 300m.) Underwater Operating Time: Unlimited (Immersion).
Sealing material	O-Ring + Special Sealant (ROHS)+ PTFE sealing Film
TRANSMISSION MEDIA transmission distance ≤ 350m	("Distance"Refers to the length from the head to the master control unit) Link to the control unit by underwater composite signal cable (customized), also recommend special underwater Cat5e/6 UTP as a minimum and match a pair of passive transceiver use (Lower Cost & restrain the interferences).



Control Platforms	
Power	12Vdc \pm 10% / 1.5A
Functions	Pan Operation [Step (Short press) / Multistep (Long press)] / Reversing Tilt Operation [Step (Short press) / Multistep (Long press)] One - Push Autoscan Activated/ Off Various Velocity Setting / Dynamic Switching Various Step Setting / Dynamic Switching Light Adjustment (Level 10) Save mode

Connecting



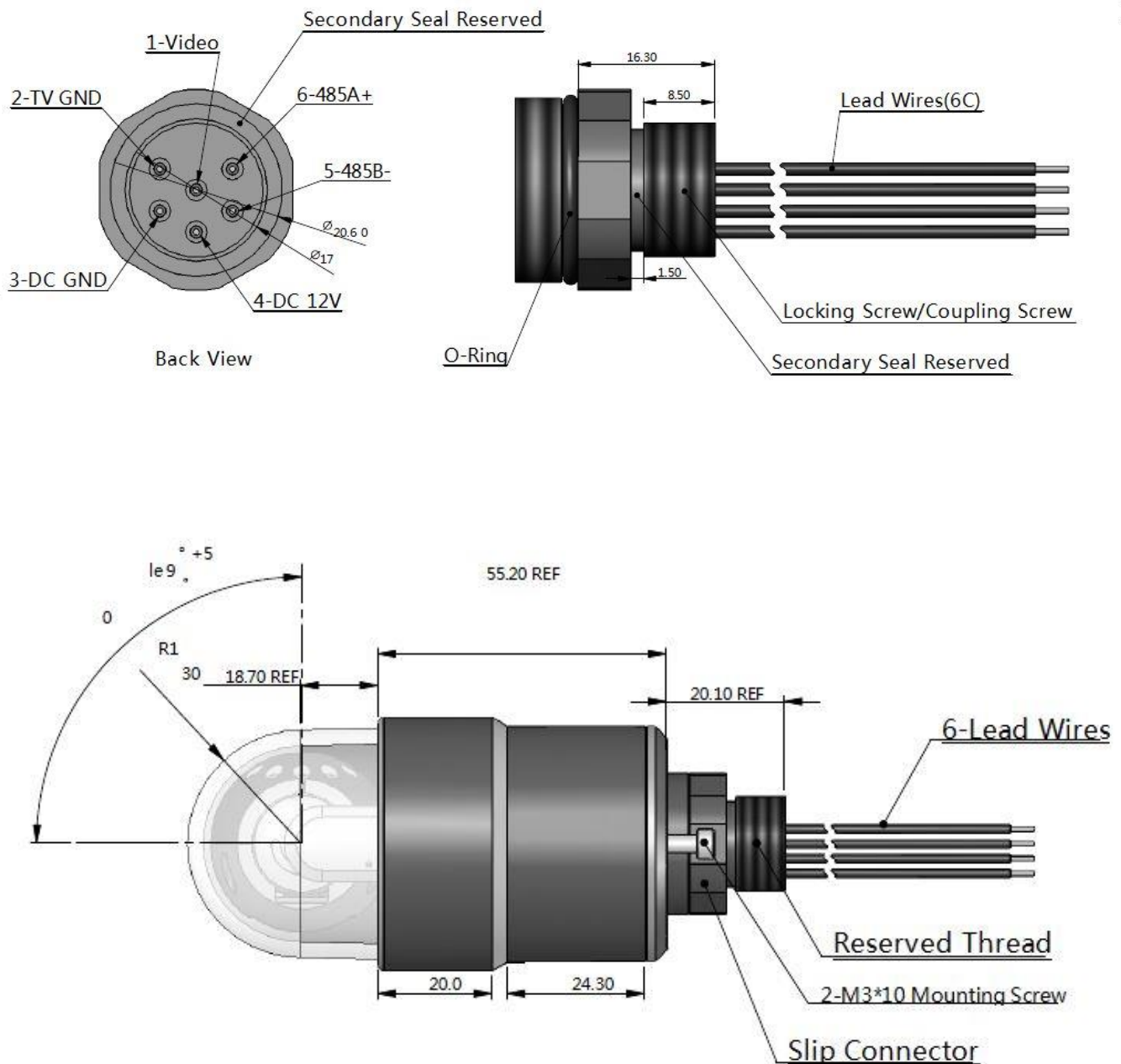


1	485B
2	485A
3	POWER GND OUTPUT
4	POWER +12V OUTPUT
5	POWER GND INPUT
6	POWER +12V INPUT
7	MEDIUM SPEED INDICATOR LIGHT
8	LOW SPEED INDICATOR LIGHT
9	HIGH SPEED INDICATOR LIGHT
10	AUTOMATIC CRUISE INDICATOR LIGHT
11	POWER INDICATOR LIGHT
12	PAN/TILE ADJUST THE SPEED , Default is medium speed .Each button press the speed changed cycle by low - medium - high
13	SAVE/FOCUSING — 3601/3602 is the save bottom before poweroff status ;3603 is cocusing minus
14	FOCUSING +

15	PAN Clockwise moving button. Click for single-step movement, long press for continuous movement
16	TILT Counterclockwise moving button. Click for single-step movement, long press for continuous movement
17	Brightness increase button, each press the brightness increases one level
18	Brightness decrease button, each press the brightness decreases one level
19	TILT Clockwise moving button. Click for single-step movement, long press for continuous movement
20	PAN Counterclockwise moving button. Click for single-step movement, long press for continuous movement
21	Automatic cruise button, each press continue or stop

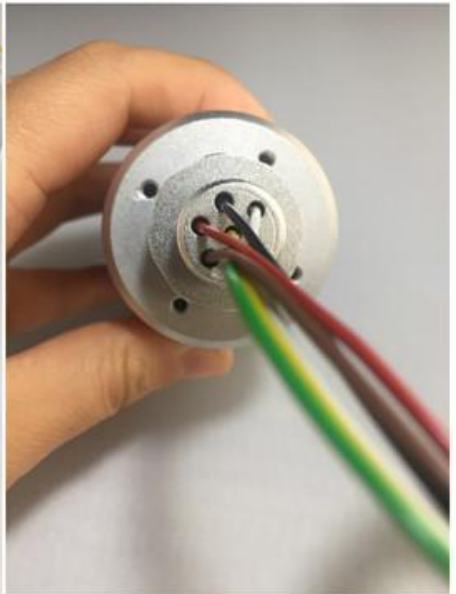


Dimension Drawings



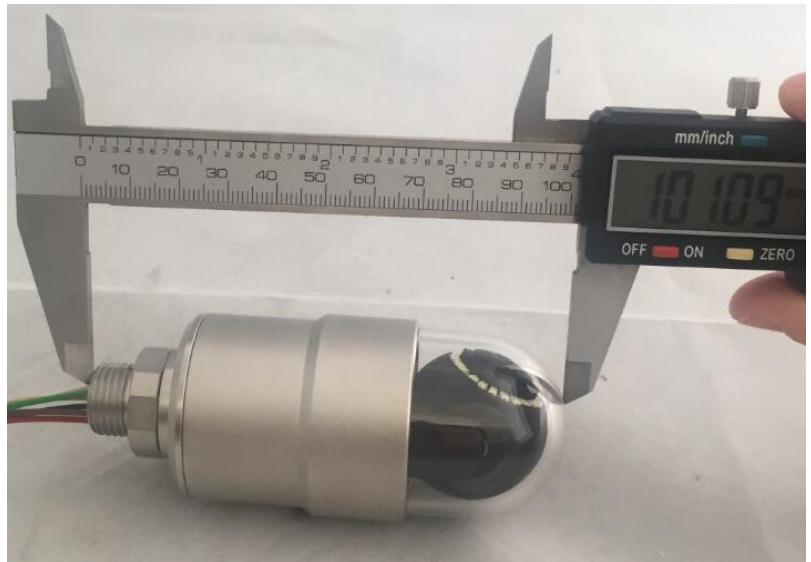


Product Pictures





SEASPECTION
ROV SERVICES



Sea Spection AS
Org. nr. 916 469 810
www.seaspection.com
Bank acct. nr. 6005.07.73348

Visiting address
Slemmestadveien 416A
1390 Vollen
Norway

Postal address
Postbox 128
1312 Slependen
Norway