

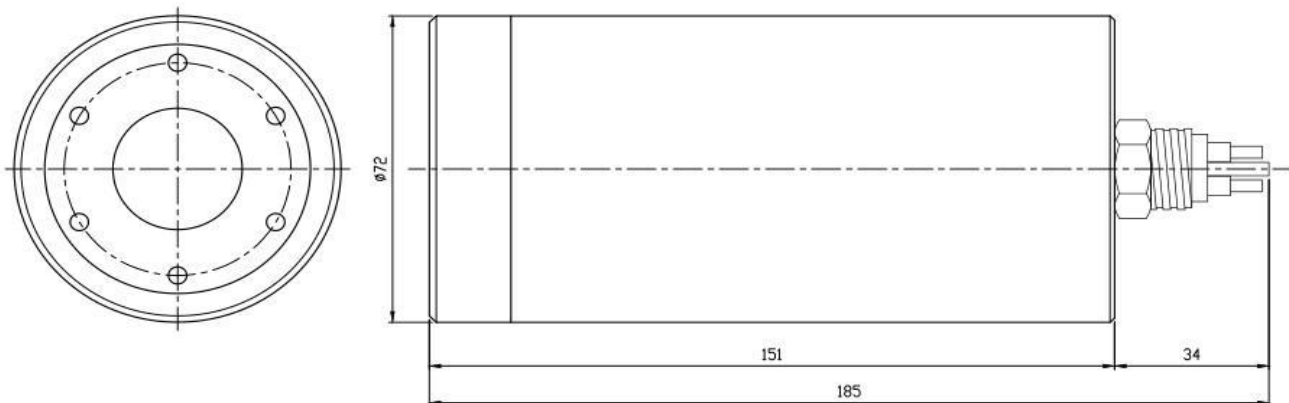


High Definition Underwater IP Camera With Zoom



Product Feature

- Shell Compressive Standard Depth 300m
- High Definition 2 Megapixel
- 18X Zoom
- Minimum Illumination 0.00001Lux@F1.2
- IP camera, ONVIF Compliant
- Power And Data Transfer By 2 Wires Up To 600m
- 1 Year Warranty





Product Feature

Sensor	1/2.9" CMO
Video standard	PAL/NTSC
FPS	50Hz:25fps (1920×1080) 60Hz:30fps (1920×1080) (18fps)
Min. illumination	Color: 0.05Lux@F1.6, B/W: 0.005Lux@F1.6
Electronic shutter	1/1 ~ 1/30000s
Day/Night	Support IR-CUT
Scan system	Row by row
Synchronous	Internal synchronous
Video output	Digital signal (Y/Cb/Cr 4:2:2 via LVDS)
S/N Ratio	>50dB
Iris control	Auto
Backlight compensation	Open/Close
White balance	Auto
Slow shutter	Support
Slow exposal	Support
Exposal mode	Auto
Privacy masking	Support
WDR	Support
Gain setting	Support
Menu	Flip / Mirror
Gain sontrol	Auto
Sharpness adjustment	Support
Focusing	Auto/Manual/One-time auto-focus
Noise reduction leve	0/1/2/3/4/5
Zoom speed	4S
Focus control	Manual/Auto
Lens initialization	Built-in
Optical zoom	18X, 5.85MM-93.6MM (F1.8 to F3.9)
Min.focus distance	100mm ~1000mm (Close focus ~ Far focus)
Digital zoom	N/A
Horizontal angle of view level	55.4~2.90

Sea Spection AS

Org. nr. 916 469 810
www.seaspection.com
Bank acct. nr. 6005.07.73348

Visiting address

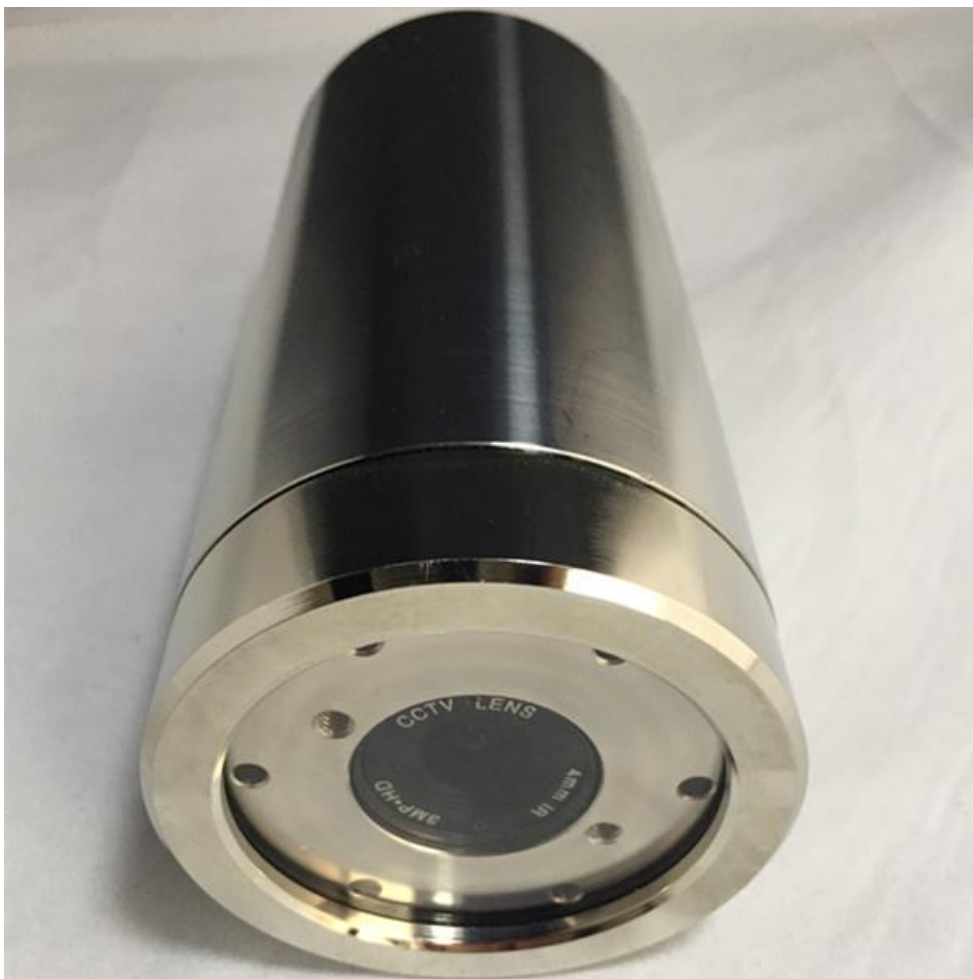
Slemmestadveien 416A
1390 Vollen
Norway

Postal address

Postbox 128
1312 Slependen
Norway



Network	1*RJ45, 10/100M, support RTSP/FTP/PPPOE/DHCP/DDNS/NTP/UPnP etc...
Function	Support WEB config, OSD, real-time video transfer, record and pop up by motion detect and alarm I/O, download/playback, JPEG snapshot, CMS, MYEYE and SDK for second development
Storage environment	(-20°C ~+70°C/20 % to 95 % RH)
Working environment	(-10°C ~ +60°C/20 % to 80 % RH)
Power supply	DC 9V-12V (suggest 12V)
Power consumption	MAX: 6W
Sizes	72mm(D)x151mm(L) excluding connector
Connector	MCBH2M SS



PLC Network Receive



Specifications PLC

Item	PLC Network Receiver
Power input	AC85V-245V 50/60HZ
Power output	DC48V
Max current	1.2A
Max capacity	220W
Speed	200Mbps
Max distance	600M
Network port	1*RJ45
Standard	IEEE802.11a IEEE802.3u IEEE802.3ab
Compatibility	200Mbps 300Mbps
Cable required	>2*0.5 ²
Shell material	ABS
Operating temperature	-20°C~40°C
Operating humidity	10%~90%RH
Operating frequency	1.8-30MHZ
Dimension	125*60*40mm

Connecting

WIRING DIAGRAM

